



Electrolux
PROFESSIONAL

Modular Cooking Range Line 700XP Base Cupboard 1/4 Module with Bottle Drawer

ITEM # _____

MODEL # _____

NAME # _____

SIS # _____

AIA # _____



371211 (E7BANB00CE)

Base Cupboard with drawer
for bottle, 1/4 module

Short Form Specification

Item No. _____

To be installed below other 700XP top units in island type installations with operations from one side. Body and internal structure of unit entirely in stainless steel. Drawer for bottles. Delivered with 50 mm height adjustable feet.

Main Features

- Unit can be easily installed below other 700 line top models.
- Unit delivered with 50 mm height adjustable feet in Stainless steel.
- Doors with handles, drawers, heating kits and runners for GN containers can be ordered separately.
- Base compartment for storage of pots, pans, sheet pans, etc.

Construction

- Constructed in Stainless steel with Scotch Brite finish to meet the highest hygiene standards.

Optional Accessories

- Kit 4 wheels - 2 swivelling with brake - it is mandatory to install Base support and wheels PNC 206135 ☐
- Flanged feet kit PNC 206136 ☐
- Frontal kicking strip for concrete installation, 200mm PNC 206146 ☐
- Frontal kicking strip for concrete installation, 400mm PNC 206147 ☐
- Frontal kicking strip for concrete installation, 800mm PNC 206148 ☐
- Frontal kicking strip for concrete installation, 1000mm PNC 206150 ☐
- Frontal kicking strip for concrete installation, 1200mm PNC 206151 ☐
- Frontal kicking strip for concrete installation, 1600mm PNC 206152 ☐
- Frontal kicking strip, 200mm (not for refr-freezer base) PNC 206174 ☐
- Frontal kicking strip, 400mm (not for refr-freezer base) PNC 206175 ☐
- Frontal kicking strip, 800mm (not for refr-freezer base) PNC 206176 ☐
- Frontal kicking strip, 1000mm (not for refr-freezer base) PNC 206177 ☐
- Frontal kicking strip, 1200mm (not for refr-freezer base) PNC 206178 ☐
- Frontal kicking strip, 1600mm (not for refr-freezer base) PNC 206179 ☐
- Kit 4 feet for concrete installation (not for 900 line free standing grill) PNC 206210 ☐
- 2 panels for service duct for single "top on base" installation PNC 206248 ☐
- Pair of side kicking strips PNC 206249 ☐
- Pair of side kicking strips for concrete installation PNC 206265 ☐

APPROVAL: _____



Experience the Excellence
www.electroluxprofessional.com

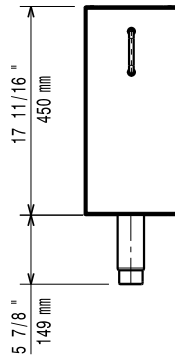
- 2 side covering panels PNC 206319 ☐
- Base support for feet or wheels - 800mm (700/900) PNC 206367 ☐
- Base support for feet or wheels - 1200mm (700/900) PNC 206368 ☐
- Base support for feet or wheels - 1600mm (700/900) PNC 206369 ☐
- Rear paneling - 600mm (700/900XP) PNC 206373 ☐
- Rear paneling - 800mm (700/900) PNC 206374 ☐
- Rear paneling - 1000mm (700/900) PNC 206375 ☐
- Rear paneling - 1200mm (700/900) PNC 206376 ☐
- Base support for feet or wheels - 600mm (700/900) PNC 206431 ☐
- Kit G.25.3 (NI) gas nozzles for 700 and 900 braising pans PNC 206464 ☐



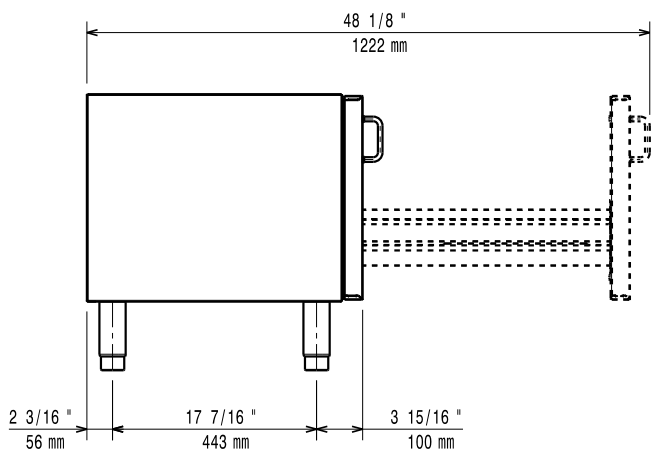
Electrolux
PROFESSIONAL

Modular Cooking Range Line 700XP Base Cupboard 1/4 Module with Bottle Drawer

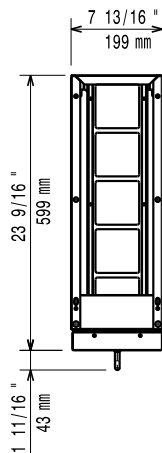
Front



Side



Top



Key Information:

External dimensions, Width:

371211 (E7BANB00CE) 200 mm

External dimensions, Depth: 550 mm

External dimensions, Height: 600 mm



Modular Cooking Range Line
700XP Base Cupboard 1/4 Module with Bottle Drawer

The company reserves the right to make modifications to the products without prior notice. All information correct at time of printing.

2025.08.04